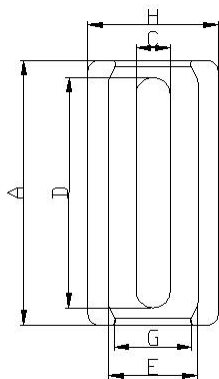
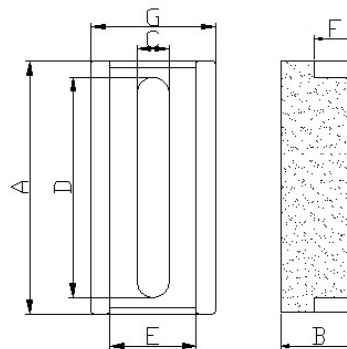
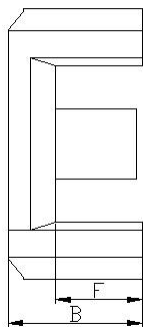


EW ferrite core



Pic.1



Pic.2

Type	Fig.	Dimensions(mm)								Effective Parameter				AL nH/N ² ±25%	Weight
		A	B	C	D	E	F	G	H	C1 mm ⁻¹	Le mm	Ae mm ²	Ve mm ³	P40	g/pair
EW 2512	Pic.1	25.2 ±0.5	5.45 ±0.15	2.90 ±0.1	21.90 ±0.2	8.20 min	3.65 ±0.15	6.80 min	12.3 ±0.3	0.40	29.6	74.0	2190	4000	13.2
EW 2813	Pic.2	28.0 ±0.5	5.1+ 0.15 /-0.1	3.20 ±0.2	26.0+ 0.1 /-0.30	9.8± 0.3	3.2 +0.3	13.0± 0.3	—	0.362	29.4	81.3	2390.2	4500	14.0