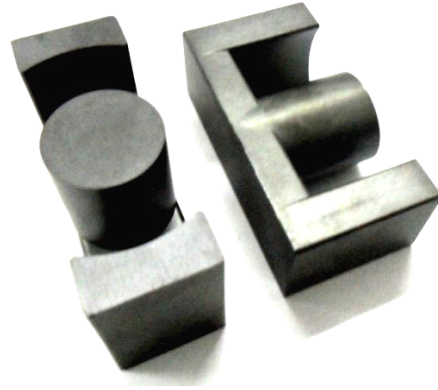
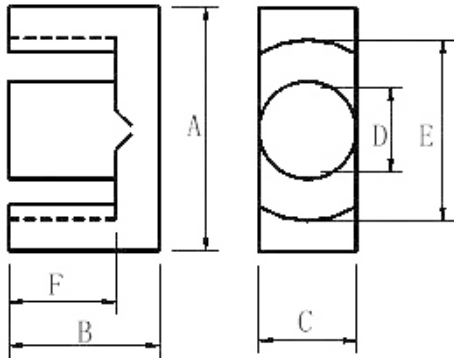


ETD ferrite core



Type	Dimension(mm)						Effective Parameter				AL±25% (n H/N ²)	Weight
	A	B	C	D	E	F	C1 mm ⁻¹	Le mm	Ae mm ²	Ve mm ³	P40	g/pair
ETD29	29.8 ±0.8	15.8 ±0.3	9.5 ±0.3	9.5 ±0.3	22.0 min	11.0 ±0.3	0.927	70.7	76.2	5390	2400	28.0
ETD34	34.2 ±0.8	17.3 ±0.3	10.8 ±0.3	10.8± 0.3	26.3± 0.7	12.1± 0.3	0.815	79.0	97.0	7675	2700	40.0
ETD39	39.1 ±0.9	20.0 ±0.3	12.5 ±0.3	12.5 ±0.3	29.1 min	14.8 ±0.3	0.737	92.1	124	1150 0	2900	60.0
ETD44	43.0 ±1.5	23.8± 0.4	15.3± 0.3	15.3± 0.3	31.0 min	17.0± 0.4	0.546	105.6 7	193. 6	2045 6	4000	90.0
ETD59	59.8 ±1.4	31.0 ±0.2	21.65 ±0.45	21.65 ±0.45	43.6 min	22.45 ±0.45	0.39	142.0 9	359. 42	5107 3.1	5800	260