

# SMT Unshielded Power Inductors GS1813DHP

## Features (特長)

- Open Magnetic circuit construction (開磁路構造設計)
- Compact and thin (輕便薄小)
- Less than 4.7mm high. (高度 4.7mm 以下)
- Large current and very low DCR. (大電流及超低阻抗)

## Applications (用途)

- Notebook, High power DC-DC applications (筆記型電腦、大功率直流轉換器)



## Product Identification (產品識別)

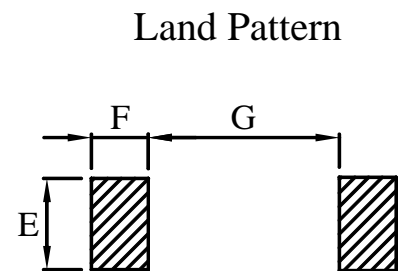
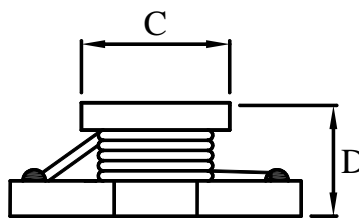
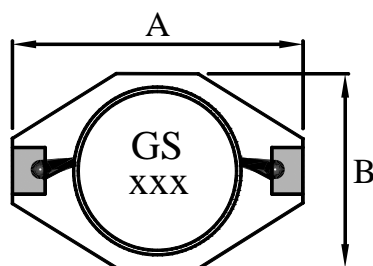
GS1813DHP - \_\_\_\_\_ (Ex. GS1813DHP-R56M)

1                      2                      3

1. SMT Unshielded Power Inductors (開放式功率電感) (GS1813DHP)
2. Inductance (電感值)
3. Tolerance (誤差值) ( 參照表 K 10%, L 15%, M 20% , N 30%)



## Configurations & Dimensions (結構圖及規格尺寸)



Land Pattern

Type (型式)	A (max)	B (max)	C ±0.2	D (max)	E	F	G
GS1813DHP	9.10	6.10	4.80	4.70	3.50	2.30	4.80

Unit In mm

♣ Design as Customer's Requested Specifications. (可依客戶特殊需求設計)

# SMT Unshielded Power Inductors GS1813DHP

Electrical Characteristics for GS1813DHP Series [GS1813DHP 系列電子特性規格]

Part Number 產品料號	Inductance ( $\mu$ H) 電感值 (L)	Test Freq. (KHz) 測試頻率	DCR ( $\Omega$ ) (max) 直流阻抗	IDC (A) (max) 定格電流
GS1813DHP -R56N	0.56	100	0.010	7.70
GS1813DHP -1R2M	1.20	100	0.017	5.30
GS1813DHP -2R2M	2.20	100	0.035	3.50
GS1813DHP -4R7M	4.70	100	0.054	2.60
GS1813DHP -100M	10.00	100	0.111	1.90
GS1813DHP -150M	15.00	100	0.170	1.50
GS1813DHP -220M	22.00	100	0.250	1.20
GS1813DHP -330M	33.00	100	0.350	0.99
GS1813DHP -470M	47.00	100	0.470	0.87

※Test Freq. : 100KHz / 0.25V.

※Operating Temp. :  $-40^{\circ}\text{C}$  ~  $+85^{\circ}\text{C}$

※Inductance drop = 10% typ. at IDC.