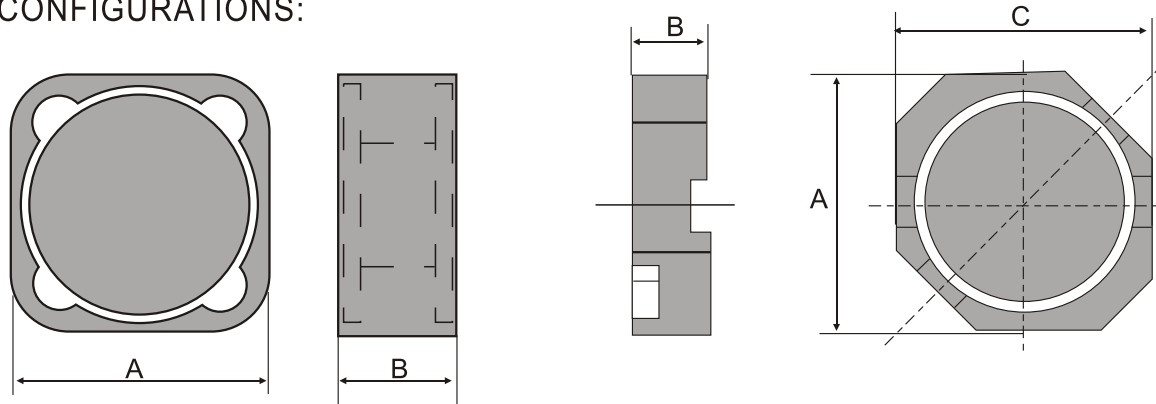


# SDRI

## SMT POWER CHOKE CORE

CONFIGURATIONS:



DIMENSION OF MAIN PRODUCTIONS:

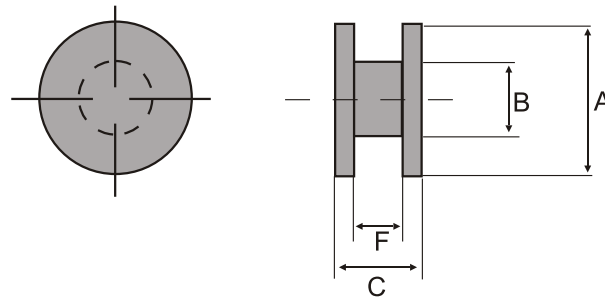
UNIT:mm

Ordering code	A	B	SRI	DR
SDRI12.5 × 12.5 × 5.2	12.5	5.2	12.5 × 12.5 × 5.2	10 × 5.2
SDRI12.5 × 12.5 × 7.2	12.5	7.2	12.5 × 12.5 × 7.2	10 × 7.2

# DR

## SMT POWER CHOKE CORE

CONFIGURATIONS:



DIMENSION OF MAIN PRODUCTIONS:

UNIT:mm

Ordering code	A	B	C	F
DR 4 × 2	4.0	1.5	2.0	1.2
DR 8.38 × 4	8.38	3.0	4.0	2.5
DR 10 × 5.2	10.0	5.25	5.2	3.0
DR 10 × 5.2	10.	6.7	5.2	4.9
DR 12.7 × 6	12.7	6.5	6.0	3.2
DR 7.2 × 3.1	7.2	3.5	3.1	1.7
DR 5.1 × 2.5	5.1	3.0	2.5	1.1