

# RID 型磁芯 (CORE RIDTYPE)

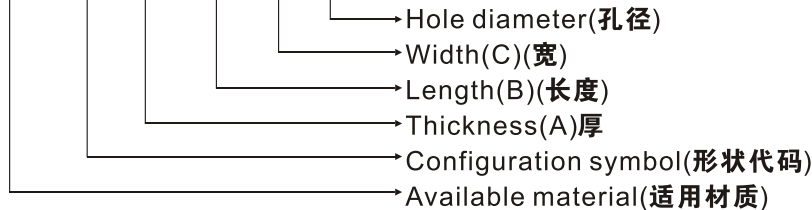
用途：整合变压器

APPLICATIONS: BALUN TRANSFORMERS

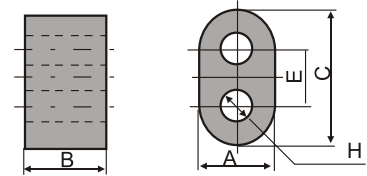
ORDERING CODE

Example:

SD6 RID 3 × 2 × 5 H1.2



CONFIGURATIONS:



DIMENSION OF MAIN PRODUCTIONS:

UNIT:mm

Ordering code	A	B	C	H	E
RID3 × 2 × 5H1.2	3.3 ± 0.2	2.0 ± 0.2	5.2 ± 0.3	1.2 ± 0.1	2.6
RID3 × 2 × 5H1.2	3.0 ± 0.2	2.0 ± 0.2	5.2 ± 0.3	1.2 ± 0.1	2.6
RID3 × 3 × 5H1.2	3.3 ± 0.2	3.0 ± 0.2	5.2 ± 0.3	1.2 ± 0.1	2.6
RID3 × 3 × 5H1.2	3.0 ± 0.2	3.0 ± 0.2	5.2 ± 0.3	1.2 ± 0.1	2.6
RID3 × 5 × 5H1.2	3.3 ± 0.2	5.0 ± 0.3	5.2 ± 0.3	1.2 ± 0.1	2.6
RID3 × 4 × 6H1.5	3.0 ± 0.2	4.0 ± 0.3	6.0 ± 0.3	1.5 ± 0.1	3.0
RID3 × 10 × 6.5H1	3.0 ± 0.2	10.0 ± 0.4	6.5 ± 0.3	1.0 ± 0.1	3.5
RID6.5 × 4 × 12H3.8	6.5 ± 0.3	4.0 ± 0.3	12.0 ± 0.5	3.8 ± 0.25	5.5
RID7.5 × 5 × 13H3.8(R)	7.5 ± 0.3	5.0 ± 0.3	13.3 ± 0.5	3.8 ± 0.25	5.8
RID7.5 × 7 × 13H3.8(R)	7.5 ± 0.3	7.0 ± 0.3	13.3 ± 0.5	3.8 ± 0.25	5.8
RID8 × 7 × 15H5	8.0 ± 0.3	7.0 ± 0.3	15.0 ± 0.5	5.0 ± 0.25	7.0
RID8 × 14 × 15H5	8.0 ± 0.3	14.0 ± 0.5	15.0 ± 0.5	5.0 ± 0.25	7.0

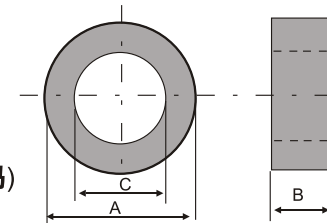
# T 型磁芯 (CORE T TYPE)

ORDERING CODE:

Example:SD6 T 4 × 2 × 1.5



CONFIGURATIONS:



APPLICATION: 1.EMI/RFI suppression. 2.Pulse and Matching transformer.  
3.Choke(Mixer) 4.Input filters

DIMENSION OF MAIN PRODUCTIONS:

UNIT:mm

Ordering code	A	B	C	Ordering code	A	B	C
T4 × 2 × 1.5	4 ± 0.2	2 ± 0.2	1.5 ± 0.2	T 12 × 5 × 8	12 ± 0.4	5 ± 0.3	8 ± 0.4
T4.8 × 0.5 × 3.4	4.8 ± 0.2	0.5 ± 0.15	3.4 ± 0.2	T 14 × 3.5 × 8	14 ± 0.4	3.5 ± 0.3	8 ± 0.4
T4.8 × 1.5 × 2.8	4.8 ± 0.2	1.5 ± 0.15	2.8 ± 0.2	T 16 × 7 × 12	16 ± 0.4	7 ± 0.3	12 ± 0.4
T6 × 2 × 3	6 ± 0.3	2 ± 0.2	3 ± 0.3	T 16 × 8 × 12	16 ± 0.4	8 ± 0.3	12 ± 0.4
T8 × 4 × 4	8 ± 0.3	4 ± 0.2	4 ± 0.3	T 16 × 9 × 12	16 ± 0.4	9 ± 0.3	12 ± 0.4
T9.2 × 3 × 5	9.2 ± 0.3	3 ± 0.2	5 ± 0.3	T 18 × 6 × 10	18 ± 0.5	6 ± 0.3	10 ± 0.5
T9.53 × 4.57 × 4.69	9.53 ± 0.3	4.57 ± 0.3	4.6 ± 0.3	T 19 × 10 × 8	19 ± 0.5	10 ± 0.4	8 ± 0.5
T10 × 5 × 8	10 ± 0.4	5 ± 0.3	8 ± 0.3	T 23 × 7 × 13	23 ± 0.5	7 ± 0.3	13 ± 0.5
T12 × 3 × 6	12 ± 0.4	3 ± 0.2	6 ± 0.3	T 29 × 7.5 × 18	29 ± 0.5	7.5 ± 0.3	18 ± 0.5